

# 2019 Welsh Index of Multiple Deprivation

[Wales Ranks out of 1,909 Lower Super Output Areas (1 = Most Deprived, 1,909 = Least Deprived), Source: WIMD 2019, Welsh Government.  
Cardiff Ranks out of 214 Lower Super Output Areas, Source: Derived from WIMD Wales Ranks]

## LLANRUMNEY

LSOA	OVERALL INDEX		Income Domain		Employment Domain		Health Domain		Education Domain	
	Cardiff	Wales	Cardiff	Wales	Cardiff	Wales	Cardiff	Wales	Cardiff	Wales
LLR01	80	618	80	648	60	578	73	618	81	690
LLR02	48	277	53	315	45	432	45	265	28	176
LLR03	57	354	56	332	68	639	48	301	30	188
LLR04	64	435	61	388	67	631	60	427	48	335
LLR05	110	1,013	98	990	94	1,029	100	1,012	90	806
LLR06	17	75	13	50	34	232	15	89	7	51
LLR07	21	94	17	68	33	223	24	130	12	65
-	-	-	-	-	-	-	-	-	-	-
-	-	-	-	-	-	-	-	-	-	-
-	-	-	-	-	-	-	-	-	-	-
-	-	-	-	-	-	-	-	-	-	-
-	-	-	-	-	-	-	-	-	-	-

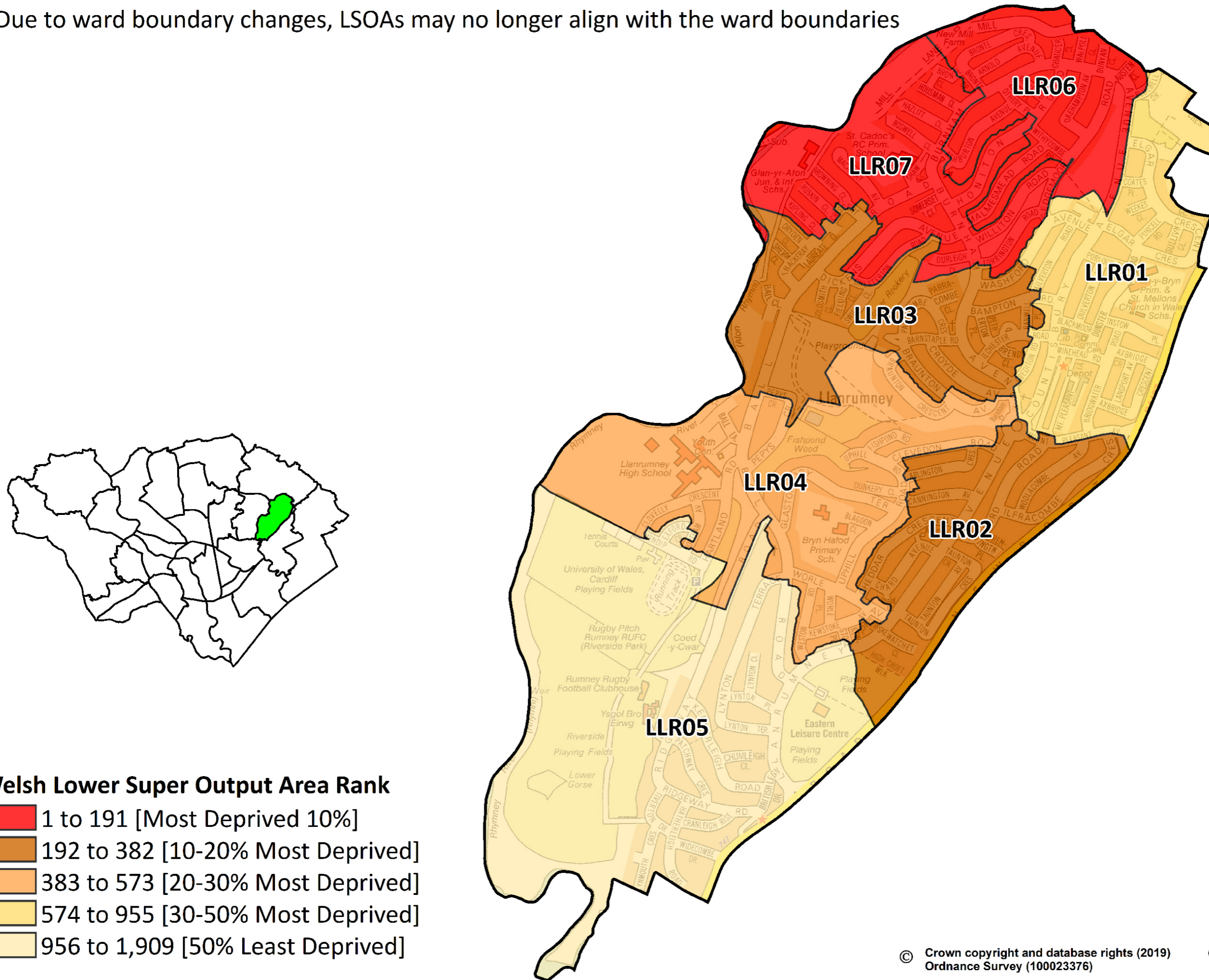
LSOA	Access to Services Domain		Housing Domain		Community Safety Domain		Physical Environment Domain	
	Cardiff	Wales	Cardiff	Wales	Cardiff	Wales	Cardiff	Wales
LLR01	93	1,195	128	1,202	44	343	66	119
LLR02	49	660	78	538	66	479	128	304
LLR03	67	836	95	699	56	414	135	325
LLR04	38	598	115	992	49	368	141	345
LLR05	84	1,111	110	940	53	402	165	465
LLR06	47	646	83	547	52	400	61	104
LLR07	60	766	87	611	45	344	77	150
-	-	-	-	-	-	-	-	-
-	-	-	-	-	-	-	-	-
-	-	-	-	-	-	-	-	-
-	-	-	-	-	-	-	-	-
-	-	-	-	-	-	-	-	-

NB. HIGHLIGHTED RANKS ARE IN THE TOP 10% MOST DEPRIVED AREAS IN WALES FOR THAT DOMAIN



# 2019 Welsh Index of Multiple Deprivation Overall Ranks: Llanrumney

NB. Due to ward boundary changes, LSOAs may no longer align with the ward boundaries



## Welsh Lower Super Output Area Rank

- 1 to 191 [Most Deprived 10%]
- 192 to 382 [10-20% Most Deprived]
- 383 to 573 [20-30% Most Deprived]
- 574 to 955 [30-50% Most Deprived]
- 956 to 1,909 [50% Least Deprived]

